



Medium Chess Puzzle # 0105

By

G Bud Games
<https://gbud.in>

January 14, 2022

Contents

Medium Chess puzzle # 0105 - Mate in 2 moves	3
Medium chess puzzle 0105	3
Solution to medium chess puzzle 0105	4
Solution 1	4
Right moves for the solution to the medium chess puzzle 0105	6
Explanation for the moves	6
Categories of medium chess puzzle 0105	7
medium chess puzzle 0105 chart	7
How to view the solution to medium chess puzzle 0105	9
How to get help for moves in the medium chess puzzle 0105 . .	10
Play chess for free	11

List of Figures

1	Solve this medium chess puzzle 0105. Mate in 2 moves @ https://gbud.in/gjxqt32	3
2	Solve this medium chess puzzle online with solution @ https://gbud.in/gjxqt32	3
3	Initial board position of medium chess puzzle 0105	4
4	Rh1+	5
5	Kxh1	5
6	Rxh3#	6
7	medium chess puzzle 105 chart 1	7
8	medium chess puzzle 105 chart 2	8
9	medium chess puzzle 105 chart 3	8
10	medium chess puzzle 105 chart 4	9
11	Click the solution button to view solutions @ https://gbud.in/gjxqt32	9
12	Click the help button to get help on next move @ https://gbud.in/gjxqt32	10
13	Solve more medium puzzles @ https://gbud.in/chsmdpz	10
14	Solve other puzzles @ https://gbud.in/chsgppz	10
15	Play chess online for free. Solve puzzles and play with friends	11
16	Solve this puzzle online by scanning this QR code or go to the link below	12

Medium Chess puzzle # 0105 - Mate in 2 moves

Solve this medium chess puzzle and improve your chess games through improvement of your chess strategies and chess tactics.

Puzzle No : 0105

Difficulty level : medium

Description : Mate in 2 moves

Next Move : Black

Player level : Intermediate

Short URL for puzzle : <https://gbud.in/gjxqt32>

Medium chess puzzle 0105

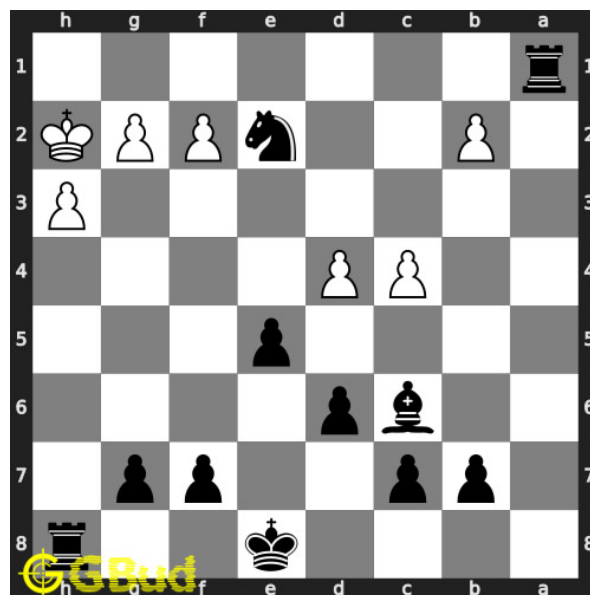


Figure 1: Solve this medium chess puzzle 0105. Mate in 2 moves @ <https://gbud.in/gjxqt32>



Figure 2: Solve this medium chess puzzle online with solution @ <https://gbud.in/gjxqt32>

Dont forget to check out [chess puzzles](#), [easy chess puzzles](#), [medium chess puzzles](#), [hard chess puzzles](#) and [chess puzzles collections](#) .

Solution to medium chess puzzle 0105

At this puzzle, next [move](#) is by [Black](#). The objective of the puzzle is to mate in 2 moves.

See the interactive solution at the [puzzle page](#)

Solution 1

Initial board position This is the initial board position of medium chess puzzle 0105.

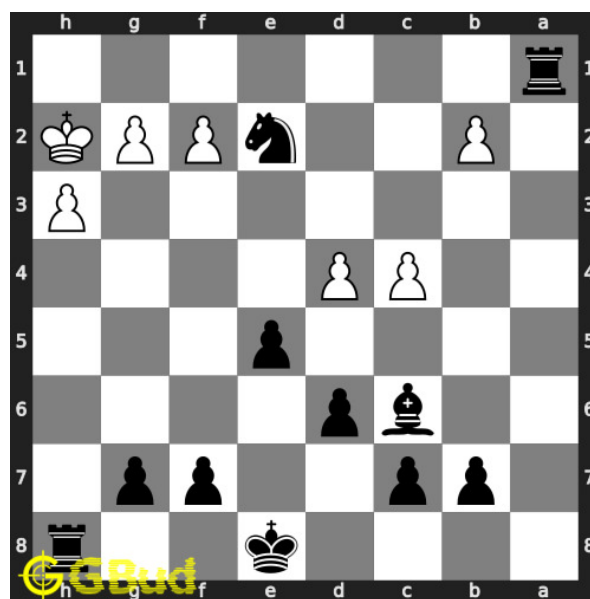


Figure 3: Initial board position of medium chess puzzle 0105

Move 1 Move by black

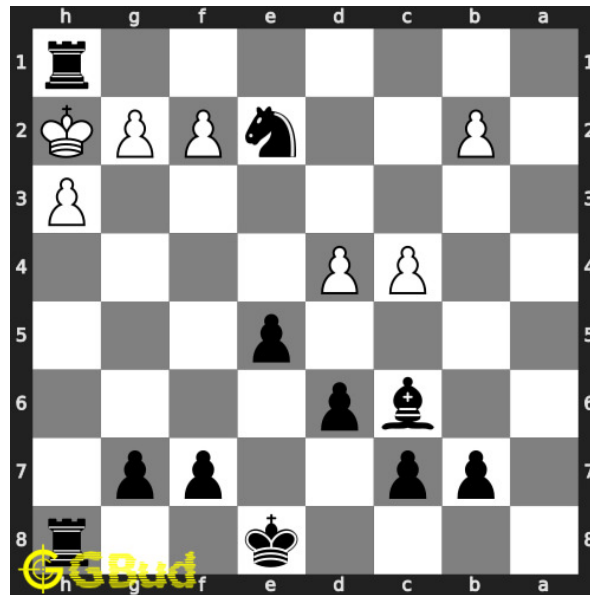


Figure 4: Rh1+

your **rook sacrifices** itself to attract the opponent's **king** to h1.

Move 2 Move by white

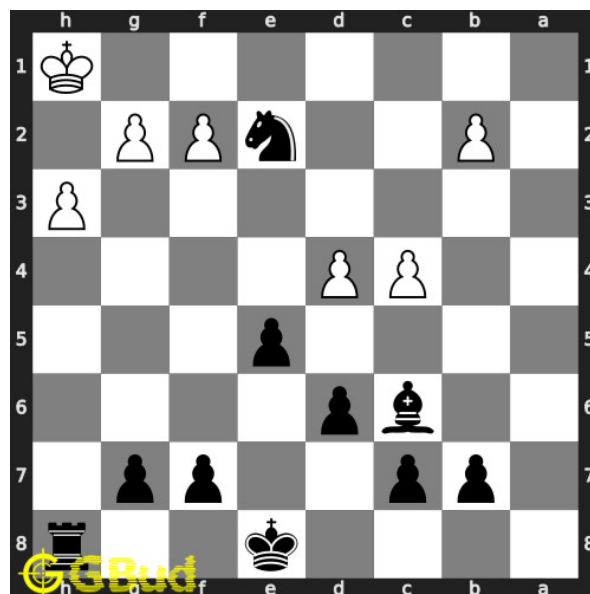


Figure 5: Kxh1

opponent's **king captures** your **rook** as this is the only legal **move** available. it can not come to g3 due to the attack from your **knight**. this is a zugzwang **move** as the **king** is forced to respond.

Move 3 Move by black

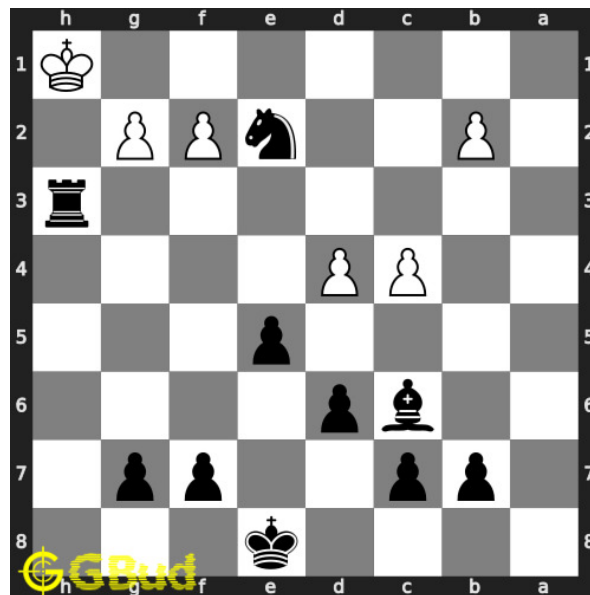


Figure 6: Rxh3#

your **rook** captures the **pawn** and **checkmate**. they can't capture your **rook** using the **pawn** since it is **pinned** to the **king** by the **bishop**. it can not **move** due to the attack from your **knight**.. this is how you can **mate** in 2 moves.

Right moves for the solution to the medium chess puzzle 0105

Based on the objective of the puzzle, you have to make the right moves. Following are the right moves

1. Rh1+, Rxh3#

Explanation for the moves

1. Rh1+ - Your rook sacrifices itself to attract the opponent's king to h1.
2. Kxh1 - Opponent's king captures your rook as this is the only legal move available. It can not come to g3 due to the attack from your knight. This is a zugzwang move as the king is forced to respond.
3. Rxh3# - Your rook captures the pawn and checkmate. They can't capture your rook using the pawn since it is pinned to the king by the bishop. It can not move due to the attack from your knight.. This is how you can mate in 2 moves.

4. For right move - You had won after a right sacrifice. Good job
5. For wrong move - Better luck next time. Try to sacrifice a rook for a checkmate

Categories of medium chess puzzle 0105

This medium chess puzzle falls in these categories.

1. [Medium chess puzzles](#)
2. [Sacrifice puzzles in chess](#)
3. [Mate in 2 puzzles in chess](#)
4. [Endgame puzzles in chess](#)
5. [Strategy puzzles in chess](#)
6. [Zugzwang puzzles in chess](#)
7. [Pin puzzles in chess](#)
8. [Rook puzzles in chess](#)

medium chess puzzle 0105 chart



Figure 7: medium chess puzzle 105 chart 1



Figure 8: medium chess puzzle 105 chart 2



Figure 9: medium chess puzzle 105 chart 3



Figure 10: medium chess puzzle 105 chart 4

How to view the solution to medium chess puzzle 0105

To view the [solution to this puzzle](https://gbud.in/blog/game/chess/medium-chess-puzzles/medium-chess-puzzle-0105.html), follow the steps given below

1. Go to the [puzzle page](https://gbud.in/blog/game/chess/medium-chess-puzzles/medium-chess-puzzle-0105.html)
2. Click the solution button (Key as shown [below](#)) to view the solution



Figure 11: Click the solution button to view solutions @ <https://gbud.in/gjxqt32>

How to get help for moves in the medium chess puzzle 0105

To get help or the possible next moves in the puzzle, , follow the steps given below

1. Go to the [puzzle page](#)
2. Click the help button (exclamation mark as shown [below](#)) to get help or suggestion on next possible [move](#)



Figure 12: Click the help button to get help on next move @ <https://gbud.in/gjxqt32>



Figure 13: [Solve more medium puzzles @ https://gbud.in/chsmdpz](https://gbud.in/chsmdpz)



Figure 14: [Solve other puzzles @ https://gbud.in/chsgppz](https://gbud.in/chsgppz)

Play chess for free

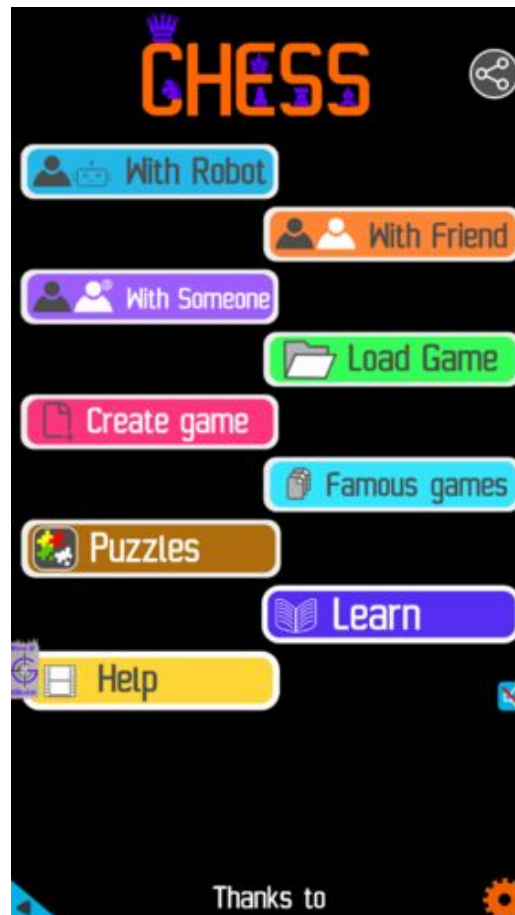


Figure 15: Play chess online for free. Solve puzzles and play with friends

Play chess for free at <https://gbud.in/chs>

We present you a platform to play chess online with friends for free. No need to install any app. You can play chess for free without registration or login.

Simple. You can do several chess related activities.

1. [solve chess puzzles](#)
2. [learn about chess](#)
3. [play chess with computer](#)
4. [play chess with friend](#)
5. [create your own chess games](#)

6. [fen viewer](#)
7. [fen editor](#)
8. [fen generator](#)
9. [pgn viewer](#)
10. [chess board editor](#)
11. [view famous chess games.](#)



Figure 16: Solve this puzzle online by scanning this QR code or go to the link below

<https://gbud.in/gjxqt32>

Read the latest article on Medium Chess puzzle # 0105 - Mate in 2 moves by scanning this QR code or click the link

Previous article : « [Medium Chess puzzle # 0104 - Mate in 2 moves](#)

Next article : [Medium chess puzzles](#) »

[Back to top](#)

[Contact Us](#)